

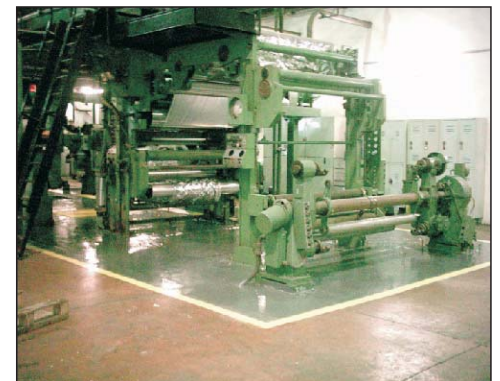
This large paper mill in Italy processes huge rolls of white paper stock to make cigarette boxes for one of the largest tobacco producers in the USA.

The specialized ROTOMECH equipment - which bonds aluminum foil to the cardboard and imprints the outside of the boxes with a special red color - takes up an area of some 1,400 square feet (130 square meters) of the facility.

The ink used to color the cartons had damaged the concrete so extensively that the cigarette company representatives ordered the production line stopped until an acceptable repair could be carried out.

ENECON Italia was called in to provide a solution to the problem. All damaged concrete was removed and repaired with ENECRETE DuraQuartz. The entire area was then treated with CHEMCLAD P4C followed by two coats of the CHEMCLAD SC.

With an ENECON specialist on hand for support, the entire project took two men a week to complete. The cigarette company representatives were so impressed with the ENECON solution that they immediately lifted the "Stop Work Order" and the equipment was immediately put back into service.



ENECON Ibérica · C/ St. Gervasi de Cassoles, 96-98 entlo. 3ª · 08022 Barcelona
· Telf: 93 211.15.30 · Fax: 93.253.11.31

Website: www.proenecon.com · Email: eneconib@proenecon.com