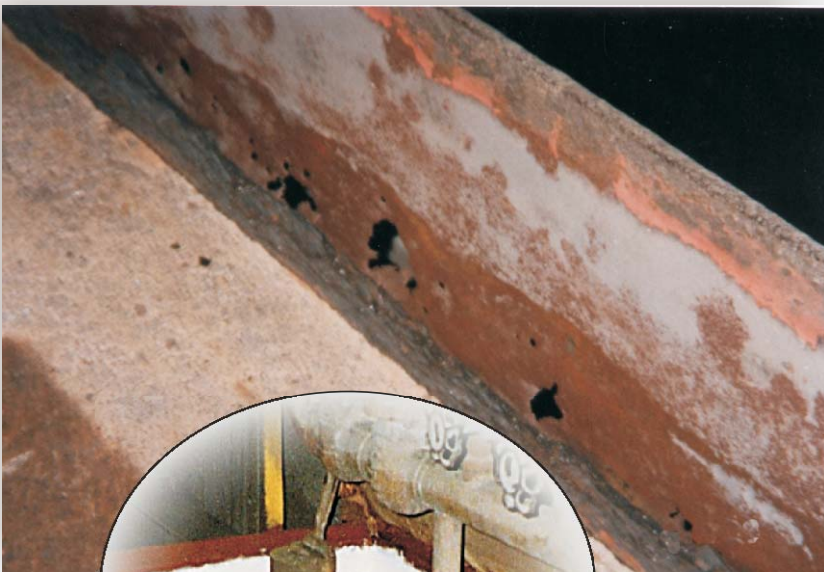




## Power Station Solves Nagging Leakage Problem With ENESEAL HR



ENECON was asked by this power station in Pennsylvania if they could come up with a solution to this on-going problem.

A concrete deck area - bordered by a metal curb - was subject to liquids splashing and collecting around the edges.

Over the years, a number of attempts at curing the problem by conventional means proved to be effective for only a short time.

In addition, time - and corrosion - had made holes in the metal edging, making continuing such attempts futile.

The plant needed a flexible solution that could handle the differential movement as well

as a material that would bond effectively to both metal and concrete.

**ENECON's ENESEAL HR** was suggested to solve the problem.

After preparing the surfaces and priming the steel, the ENECON Field Engineer used polyethylene tape to "bridge" the gap and create a smooth transition between the curb and the floor.

Then, using fiberglass mesh to reinforce the repair, the **ENESEAL HR** was brushed on to completely seal the joint and prevent further leakage.

**PROBLEM SOLVED!**

ENECON Ibérica · C/ St. Gervasi de Cassoles, 96-98 entlo. 3ª · 08022 Barcelona  
· Telf: 93 211.15.30 · Fax: 93.253.11.31

Website: [www.proenecon.com](http://www.proenecon.com) · Email: [eneconib@proenecon.com](mailto:eneconib@proenecon.com)