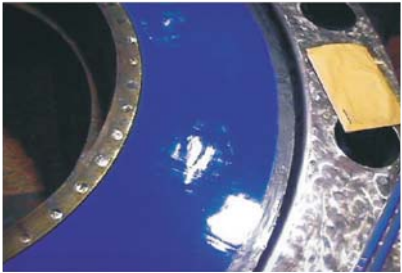
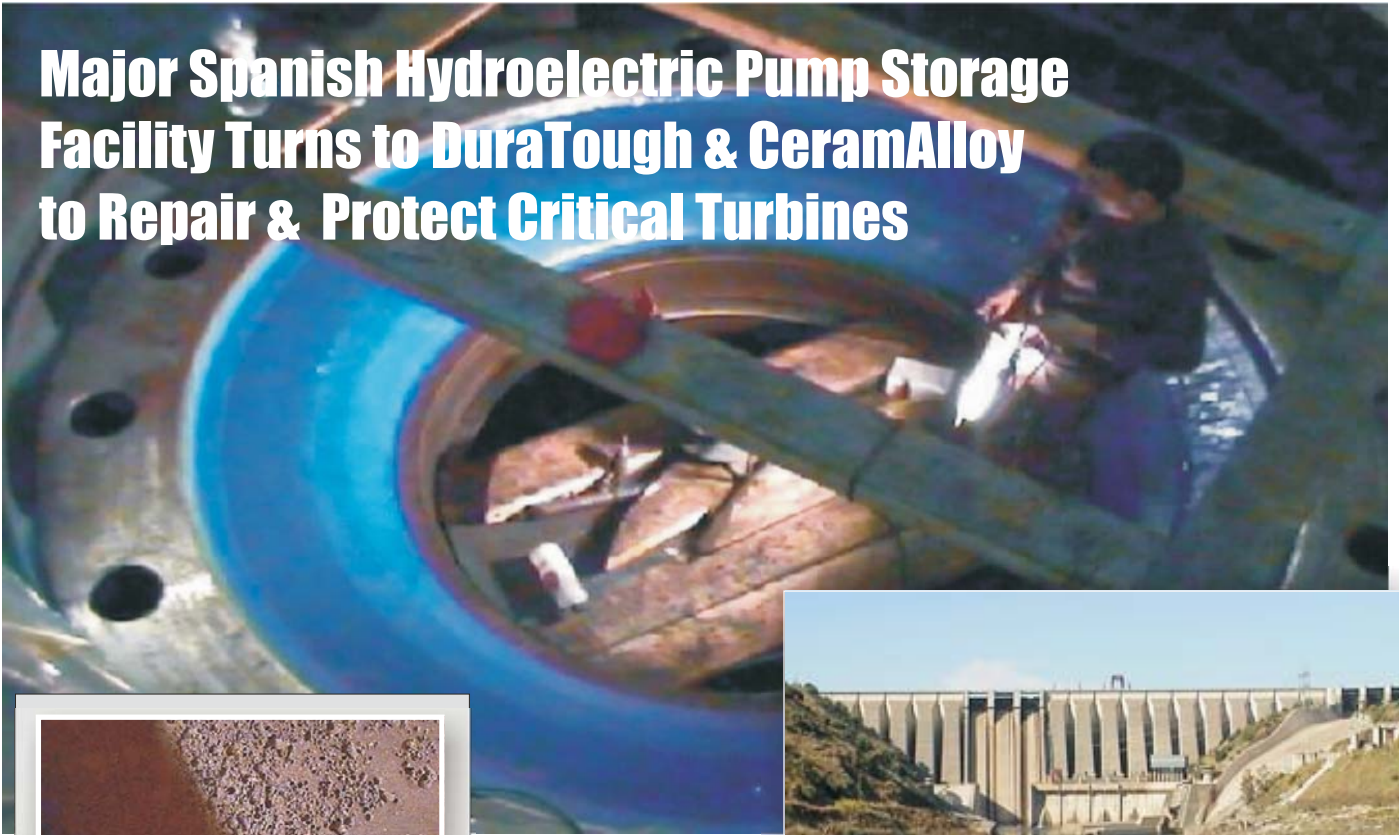


Major Spanish Hydroelectric Pump Storage Facility Turns to DuraTough & CeramAlloy to Repair & Protect Critical Turbines



At this hydroelectric plant - one of the most important facilities in Spain - erosion and corrosion damage had created a serious maintenance concern for the plant engineers. They needed a cost effective and commercially proven solution to their cavitation accelerated, erosion/corrosion problems. They turned to their local ENECON Ibérica

Field Engineering Team who recommended CeramAlloy to repair and protect all areas subject to erosion and corrosion with an added application of DuraTough on those areas subject to cavitation attack.

The head height at this plant is 450 meters (about 1,300+ feet). It also operates as a pump storage facility - pumping water at

night (using excess power from the grid) to the lake above in order to be ready to provide immediate power during the day as and when required.

The plant engineers are delighted with the performance of the ENECON system.



ENECON Ibérica · C/ St. Gervasi de Cassoles, 96-98 entlo. 3ª · 08022 Barcelona
· Telf: 93 211.15.30 · Fax: 93.253.11.31
Website: www.proenecon.com · Email: eneconib@proenecon.com