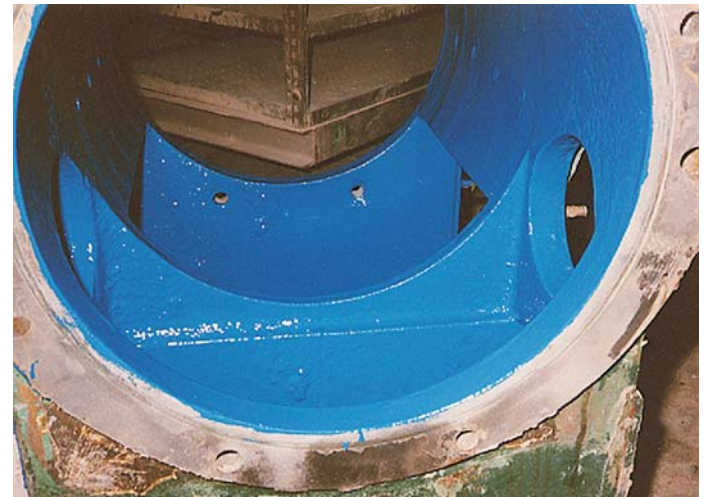


Plug Mill at Pottery Plant Handling Highly Abrasive Clay, Repaired & Protected With CeramAlloy



An ENECON Engineer in the Mid-Atlantic region provided these pictures and technical details concerning a project at a major pottery manufacturer.

Highly abrasive clay wore the nickel plating inside this plug mill -- a type of

pump designed to remove air from clay. The clay is then extruded as a solid cylindrical plug.

Nickel contamination in the clay caused defective pottery when fired. The plug mill had to be shut down until the problem could be solved.

The local ENECON Fluid Flow Systems Specialist was called in for his expert advice and he immediately recommended ENECON CeramAlloy CL+ to resurface the damaged wear surfaces of the plug mill.

The application was

completed by the plant's own maintenance engineers and took just one day to complete.

Just \$600 worth of CeramAlloy was needed to repair the plug mill good as new -- maybe better!