

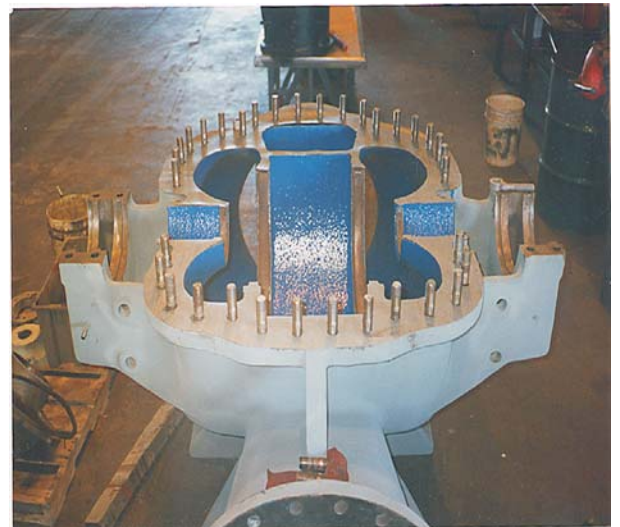
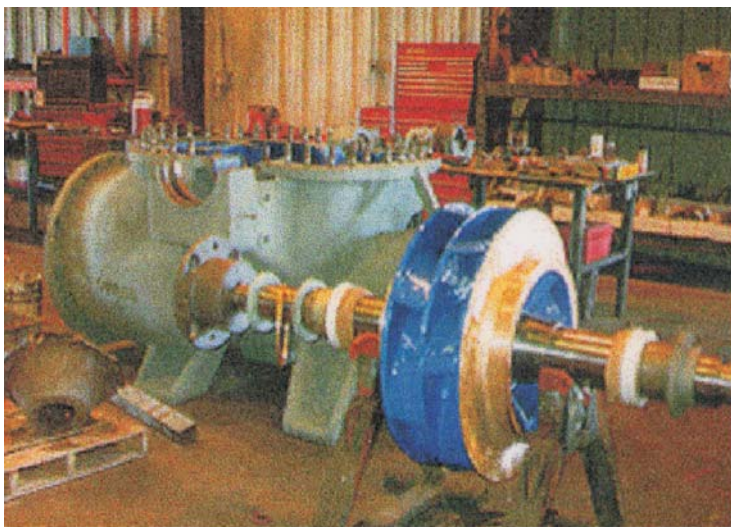
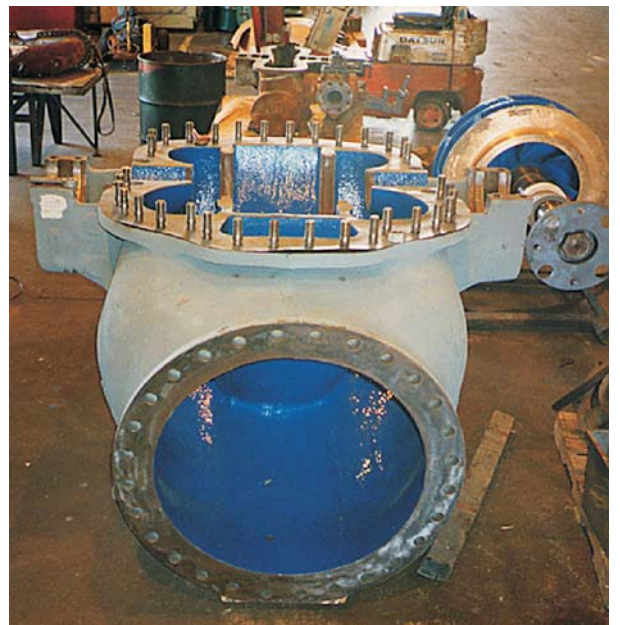
## International Chemical Company Solves Severe Erosion/Corrosion Problems With METALCLAD CeramAlloy

An ENECON Fluid Flow Systems Specialist based in Houston, Texas forwarded these photographs highlighting an application at a major international chemical company's plant in south Texas.

This huge split case pump, which the plant uses in their cooling water system, needed to be repaired and protected from erosion and corrosion attack.

The plant engineers turned to ENECON CeramAlloy and the expert technical support offered by the ENECON Engineering Team.

The entire repair project took just two days to complete and saved the plant many thousands of dollars over more conventional repair and/or replacement procedures.



ENECON Ibérica · C/ St. Gervasi de Cassoles, 96-98 entlo. 3ª · 08022 Barcelona  
· Telf: 93 211.15.30 · Fax: 93.253.11.31  
Website: [www.proenecon.com](http://www.proenecon.com) · Email: [eneconib@proenecon.com](mailto:eneconib@proenecon.com)