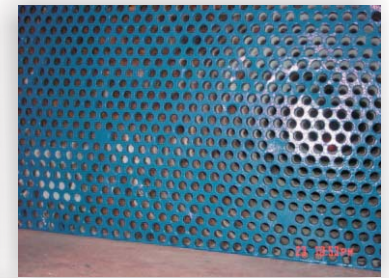
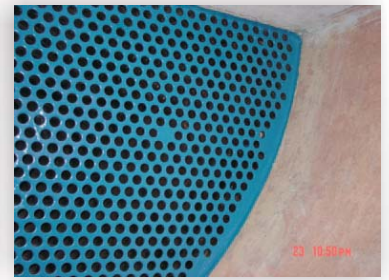
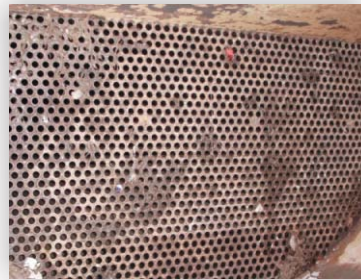


## Nuclear Plant Engineers Repair & Resurface Heat Exchanger Tube Sheet with CeramAlloy

A major atomic power plant located in the Mid Atlantic Region selected CeramAlloy CP+AC and CL+AC to repair, resurface and protect this critical heat exchanger tube sheet.

Using the plant's on-site coating contractor supported by Carl Durham, ENECON's Projects Manager, the entire tube sheet refurbishment was completed in just a few days. The results depicted in these photos speak for themselves.



ENECON Ibérica · C/ St. Gervasi de Cassoles, 96-98 entlo. 3ª · 08022 Barcelona  
· Telf: 93 211.15.30 · Fax: 93.253.11.31  
Website: [www.proenecon.com](http://www.proenecon.com) · Email: [eneconib@proenecon.com](mailto:eneconib@proenecon.com)