



This Francis Turbine, operating at a 660 foot head, was experiencing continuing cavitation problems - requiring expensive weld repairs after every season.

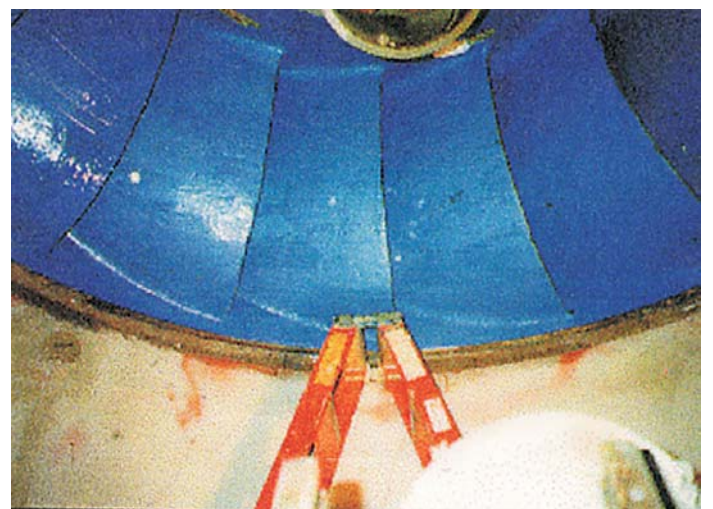
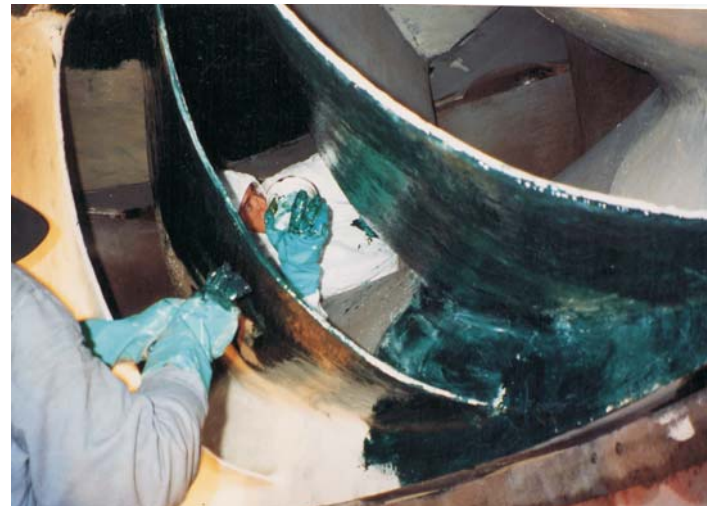
The plant chose to conduct a trial application to one of the turbine blades using ENECON DuraTough. When opened for inspection in the following year, the DuraTough was found to be in excellent condition having experienced only very minor damage. But, **the original blade metal had been protected for the entire season.**

Based on this outstanding performance, the decision was taken to coat and protect the entire turbine.

Both the high and low pressure sides of all the blades plus the central "tail cone" were treated with the DuraTough system and the unit was returned to service.

When opened next for inspection, after operating for some 13 months, the **DuraTough was found in perfect condition** in over 95% of the area treated. While there was some minor damage to the coating, this was limited to only three small areas on each blade - representing about 5% of the overall area that had been treated.

These areas were easily repaired and protected with the DuraTough; and, the unit was back in service and running for yet another season.



PROENECON SYSTEMS, S.A. · C/ Electricitat, 6. Pol.Ind. La Torre · 08760 - MARTORELL. Barcelona.

Tel: 93.211.15.30 · Fax: 93.253.11.31

Website: www.proenecon.com · Email: eneconib@proenecon.com