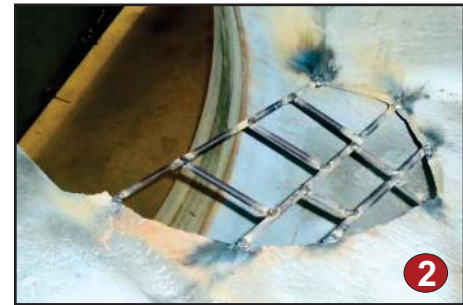
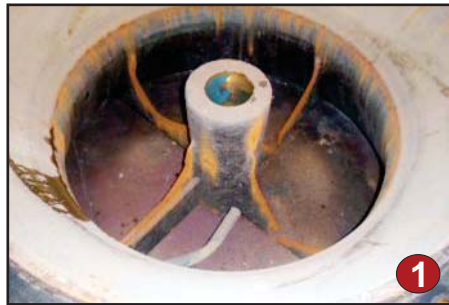


Municipal Storm Water Drain Pump Repaired & Protected With CeramAlloy

Problem: Debris such as sticks, trash and silt eroded this municipal storm water drain pump bowl's veins (pg.1). The debris also broke the impeller's veins (pg. 2).

Solution: A new 'skeleton' for the veins was constructed by welding metal bars and wire mesh. CeramAlloy CP+AC was used to rebuild the veins and CeramAlloy CL+AC protected all the internal pump surfaces.

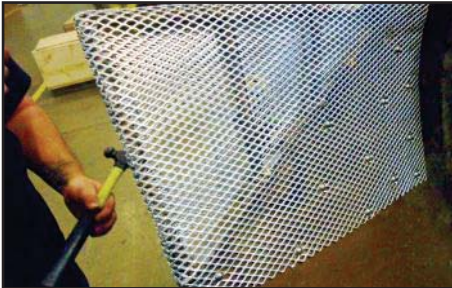
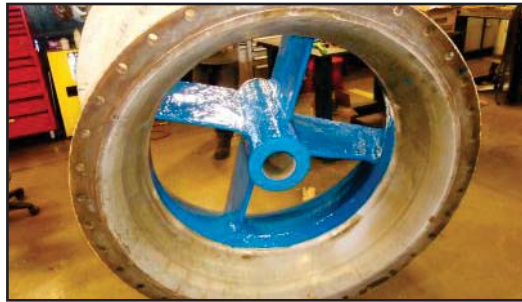
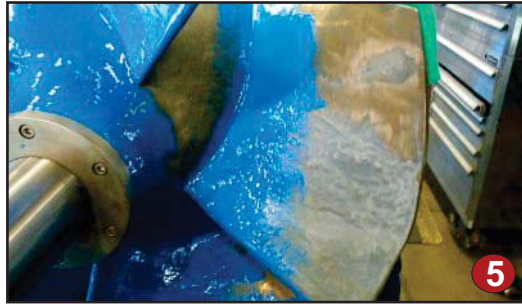
Savings: A new pump has a 24 week lead time. The ENECON solution was completed in 1 week and provided over \$50,000 in savings.



PROENECON SYSTEMS, S.A. · C/ Electricitat, 6. Pol. Ind. La Torre · 08760 - MARTORELL. Barcelona.
· Telf: 93 211.15.30 · Fax: 93.253.11.31

Website: www.proenecon.com · Email: eneconib@proenecon.com

ENECON® NEWS



PROENECON SYSTEMS, S.A. · C/ St. Gervasi de Cassoles, 96-98 entlo. 3ª · 08022 Barcelona
· Telf: +34 93 211.15.30 · Fax: +34 93.253.11.31
Website: www.proenecon.com · Email: eneconib@proenecon.com