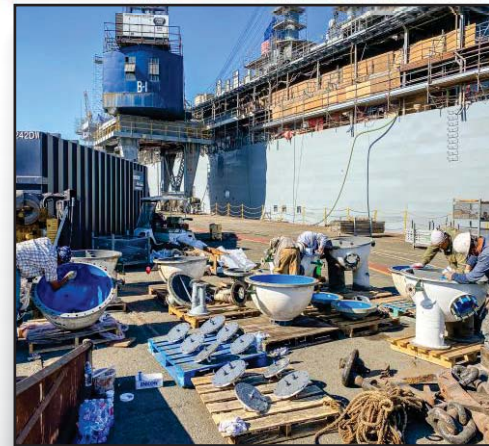


U.S. Navy Selects CeramAlloy To Protect Critical Cooling Water System Components



When it comes to superior protection of its most critical components, the U.S. Navy routinely turns to ENECON and specifies **METALCLAD CeramAlloy CL+AC** to repair and protect its fluid flow components from erosion & corrosion damage from sea water.

After each cooling water system component was carefully grit blasted to a 3 mil profile, and inspected, ENECON NorCal then coordinated the application of two coats of **CeramAlloy CL+AC**, first coat gray and second coat blue.

These components are now protected better than new and ready to be re-installed on the vessel.

PROENECON SYSTEMS, S.A. · C/ Electricitat, 6. Pol. Ind. La Torre · 08760 - MARTORELL. Barcelona.

· Telf: 93 211.15.30 · Fax: 93.253.11.31

Website: www.proenecon.com · Email: eneconib@proenecon.com