

Commuter Rail Platform Steps Repaired & Protected With ENECRETE & CHEMCLAD



One of the oldest and largest commuter railway systems in the U.S. is in a constant struggle to keep its infrastructure from degrading.

These station platform steps were in very bad condition after years of use and harsh northeastern winters. The concrete was deteriorating causing an unsafe and unsightly area.

Replacing the steps was not an option due to the high cost and the length of time the stairs would be out of service. The local ENECON Field Engineering Specialist was contacted to provide a better solution.

He suggested that the steps be rebuilt over the course of a 3-day holiday weekend so customer disruption would be kept to a minimum.

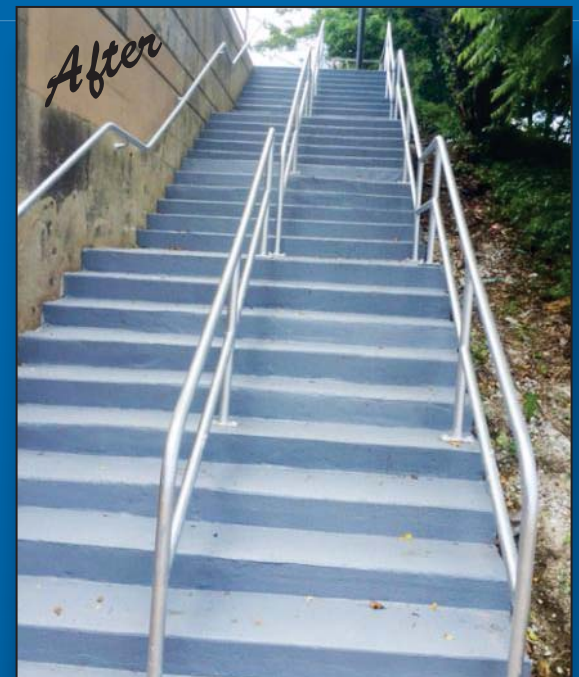
After manual preparation and cleaning, lost

concrete on the treads and toe kicks was repaired using DuraQuartz LW.

DuraFill was then used over the entire stair case to create a uniform surface. The steps were then coated with 2 coats of CHEMCLAD SC back

rolled with aggregate to provide slip resistance.

This successful project will lead to more step repair and protection applications worth hundreds of thousands of dollars.



PROENECON SYSTEMS, S.A. · C/ Electricitat, 6. Pol. Ind. La Torre · 08760 - MARTORELL. Barcelona.
· Telf: 93 211.15.30 · Fax: 93.253.11.31

Website: www.proenecon.com · Email: eneconib@proenecon.com