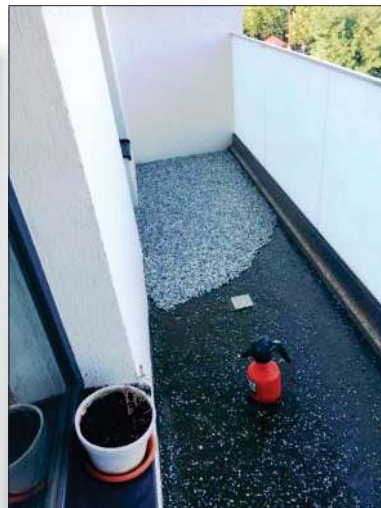




Romanian Apartment Building Creates Decorative Balcony Floors With DuraFill



The owner of this newly constructed Romanian apartment building used DuraFill as a durable but aesthetically pleasing finish to balcony floors.

The new concrete was coated with a cement based waterproofing solution. After being cleaned of any loose debris, a thin layer of DuraFill was then applied as a primer.

One centimeter pebbles were chosen to create the desired design for the balcony floor. The pebbles were mixed with DuraFill to wet them out.

The pebbles were then troweled on to the balcony floor in a uniform and even layer with proper grading towards the drains.

PROENECON SYSTEMS, S.A. · C/ Electricitat, 6. Pol. Ind. La Torre · 08760 - MARTORELL. Barcelona.
· Telf: 93 211.15.30 · Fax: 93.253.11.31

Website: www.proenecon.com · Email: eneconib@proenecon.com