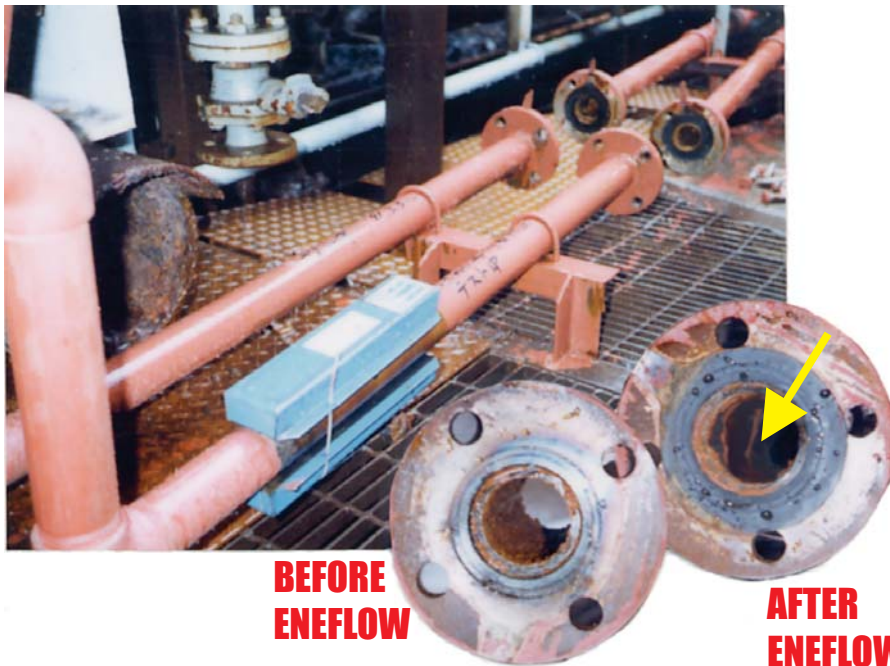


KOBE STEEL CORPORATION (JAPAN) ENEFLOW 5000 Test Installation

ENECON's distributor in Kobe, Japan, arranged to conduct a test at KOBE STEEL CORPORATION to determine just how effective our ENEFLOW Fluid Dynamic Power Cells really are in controlling mineral scale build-up in pipes and other fluid flow equipment. The results were extraordinary as the following pictures illustrate.

A pair of new 2-inch iron pipes were welded to a main cooling water pipe [8 in.] At the steel mill. One pair of ENEFLOW 5000's were installed on one of the pipes and the other one was left "as is" for control purposes.

A flow meter was also installed and this confirmed that the flow rate through the test pipes was a very slow 1 ft/sec. [Note: At least 3 ft/sec. Is recommended for optimum performance.]



**BEFORE
ENEFLOW**

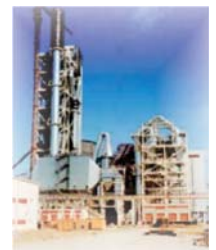
**AFTER
ENEFLOW**

Two months later...

The pipes were inspected and the results clearly confirmed the effectiveness of our ENEFLOW systems. The pipe which was not protected with our Power Cells was **entirely covered with hard scale.**

But the pipe protected with ENEFLOW Power Cells was **virtually scale free.**

The plant uses water from the Yodo River. The total hardness ranges to a high of 300 mg/l. [17.5 gpg].



PROENECON SYSTEMS, S.A. C/ Electricitat, nº6. Pol.Ind. La Torre. 08760-MARTORELL. Barcelona.
Telf: 93 211.15.30

Website: www.proenecon.com · Email: eneconib@proenecon.com