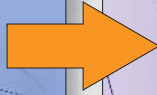
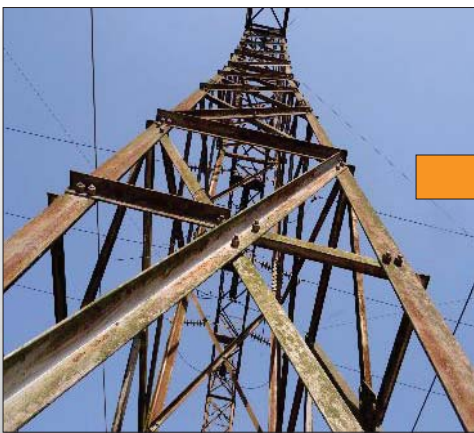
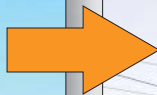
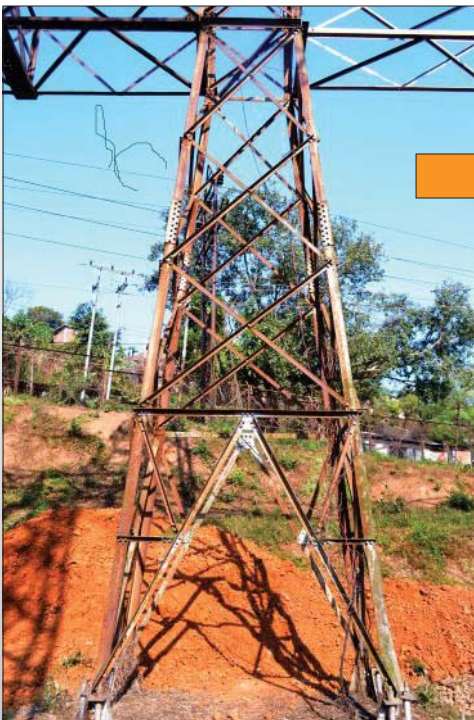


## Indian Power Company Protects Their Electrical Towers From Corrosion With ENESEAL CR



Built in the 1960's, these steel electrical towers were severely corroding because of the very humid and rainy weather in this region of India. The power company was looking for a cost effective solution to this on-going problem.

ENECON's ENESEAL CR was first used for a variety of sample tests throughout the substation and after a 6 month trial period, ENESEAL CR was approved and specified for this application.



Over 12,000 sq. ft. of surface area was coated with ENESEAL CR. The power company engineers were so pleased with the results, additional substation towers will now be coated and protected.



PROENECON SYSTEMS, S.A. · C/ Electricitat, 6. Pol.Ind. La Torre · 08760 - MARTORELL. Barcelona.

Tel: 93.211.15.30 · Fax: 93.253.11.31

Website: [www.proenecon.com](http://www.proenecon.com) · Email: [eneconib@proenecon.com](mailto:eneconib@proenecon.com)