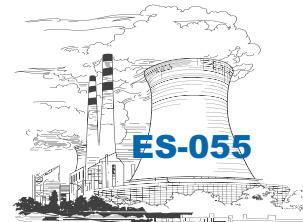


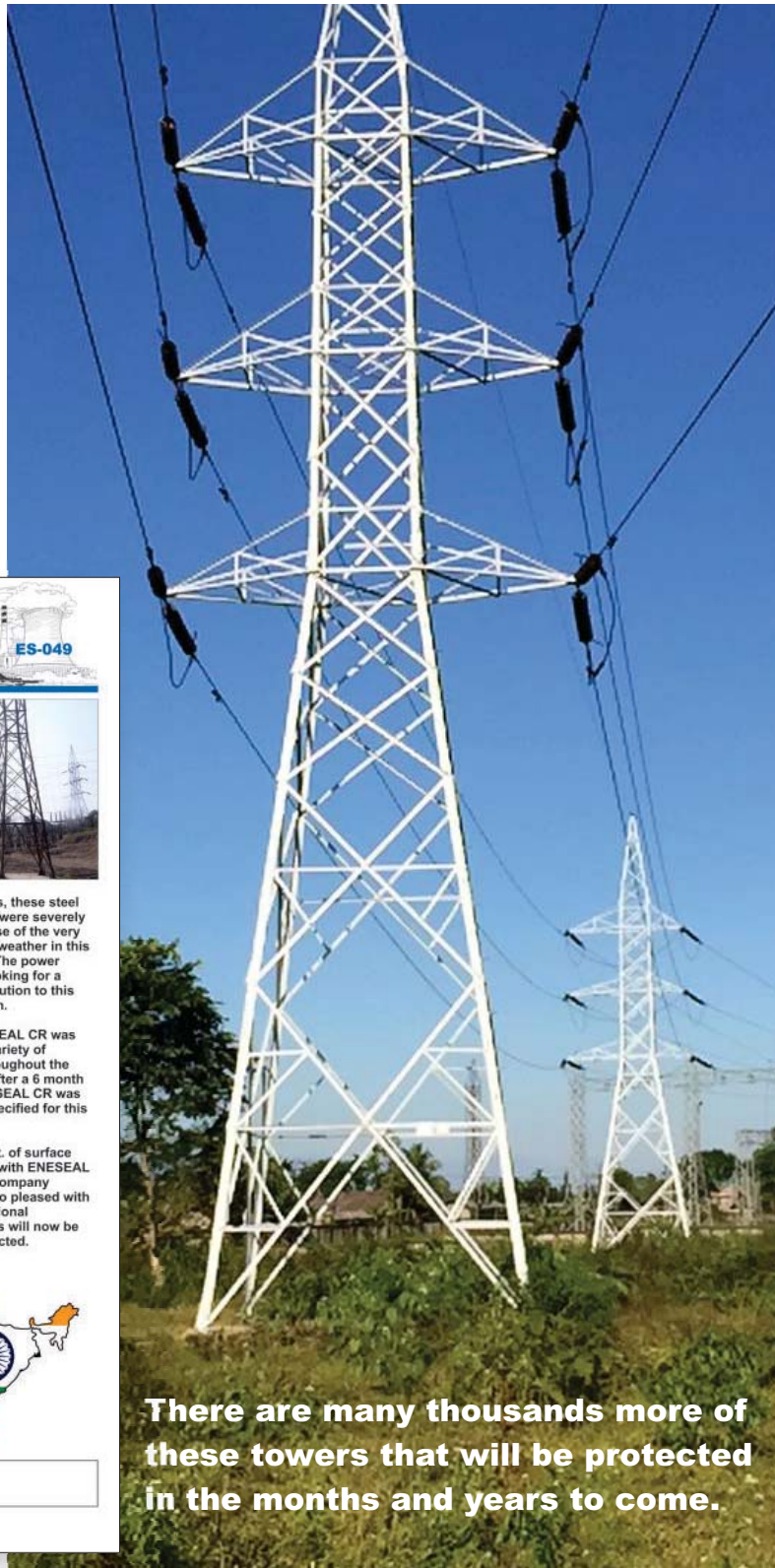
ENECON[®] NEWS



\$200,000+ of ENESEAL CR & CHEMCLAD SC and Still Counting...

For the past 3 years this power company in India has been coating tens-of-thousands of square feet of steel electrical towers to protect them from the severe corrosion issues found in various parts of India.

The results have been outstanding! Minimal surface preparation followed by hand-brushing or rolling is all that is used. The surface tolerant properties of ENESEAL CR provides the power company with the ability to protect these towers without shutting the power off. CHEMCLAD SC is used on the bases of some of these towers located in areas which may be prone to flooding.



ENECON[®] NEWS

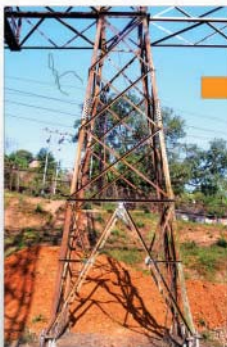


Indian Power Company Protects Their Electrical Towers From Corrosion With ENESEAL CR



Built in the 1960's, these steel electrical towers were severely corroding because of the very humid and rainy weather in this region of India. The power company was looking for a cost effective solution to this on-going problem.

ENECON's ENESEAL CR was first used for a variety of sample tests throughout the substation and after a 6 month trial period, ENESEAL CR was approved and specified for this application.



Over 12,000 sq. ft. of surface area was coated with ENESEAL CR. The power company engineers were so pleased with the results, additional substation towers will now be coated and protected.



6 Platinum Court • Medford, NY 11763
Toll Free: 888-4-ENECON (888-436-3266) • Phone: 516-349-0022 • Fax: 516-349-8522
www.enecon.com • info@enecon.com

Copyright ©2015 by ENECON[®] Corporation.

REPAIR - DON'T REPLACE[®]

There are many thousands more of these towers that will be protected in the months and years to come.

PROENECON SYSTEMS, S.A. · C/ Electricitat, 6. Pol.Ind. La Torre · 08760 - MARTORELL. Barcelona.

Tel: 93.211.15.30 · Fax: 93.253.11.31

Website: www.proenecon.com · Email: eneconib@proenecon.com