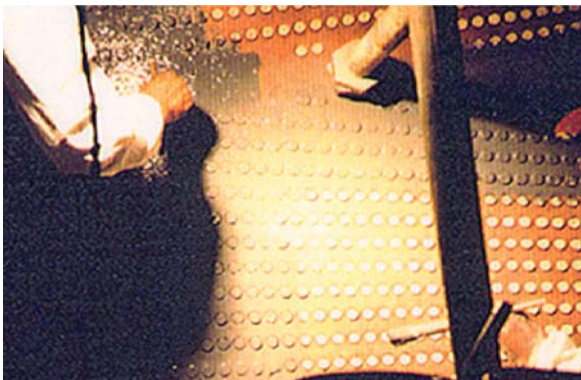




Engineers inspect one of the massive waterboxes at the power station.

California Utility Repairs & Protects 8 Waterboxes & Tubesheets on Main Steam Condensers...



The first coat of CeramAlloy CL+ (Gray) being applied to one of the tubesheets.

\$250,000 of ENECON CeramAlloy Saves Millions of Dollars Over Conventional Repair and Replacement Costs!



Final coat of CeramAlloy CL+ (Blue) applied to all wet surfaces to provide years of erosion/corrosion protection to the condensers.

The ENECON Engineering Team in Southern California, supervised the installation of a quarter-million dollars worth of CeramAlloy CP+ and CL+ to rebuild and resurface 8 waterboxes and tubesheets at a power station near Los Angeles.

ENECON CeramAlloy was selected because of its outstanding adhesion, its very low moisture permeability, and its exceptional tolerance to “cold wall” effects.

PROENECON SYSTEMS, S.A. · C/ Electricitat, 6. Pol. Ind. La Torre · 08760 - MARTORELL. Barcelona.
· Telf: 93 211.15.30 · Fax: 93.253.11.31

Website: www.proenecon.com · Email: eneconib@proenecon.com