

## Super Job on this Super Titan

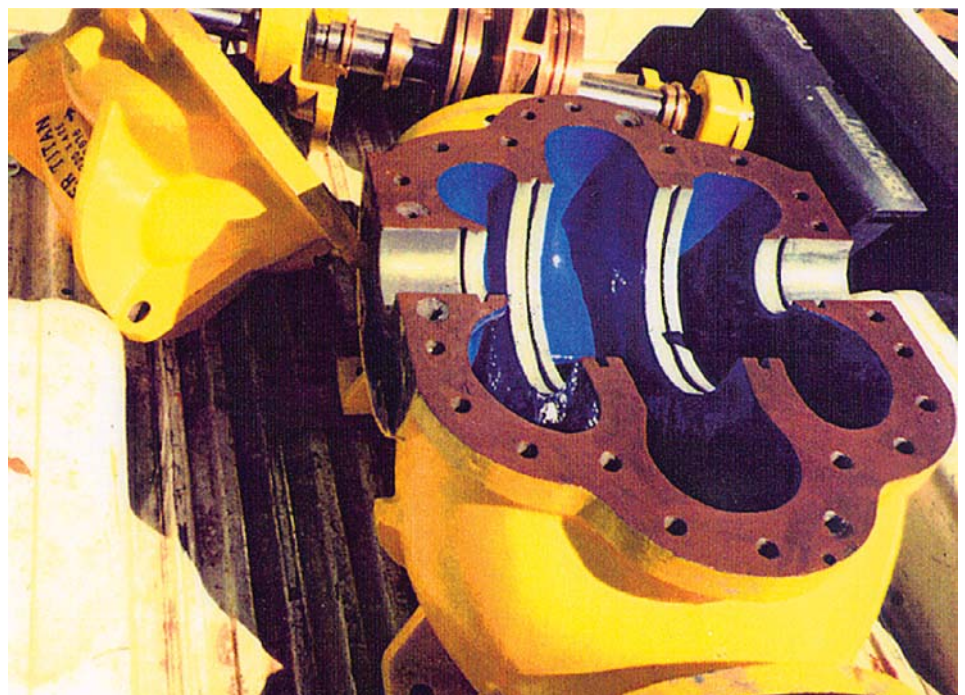
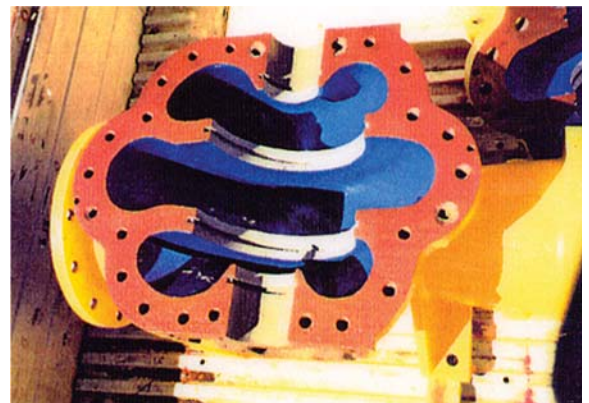
ENECON's Australian Engineering Team came across this Super Titan pump at one of the largest copper mines in the world.

Severe erosion and corrosion from copper sulfate had taken its toll. So much so, in fact, that this **\$20,000 casing** was found in the **scrap heap!**

The level of ingrained contaminant required grit blasting and "leaching" the casing **6 times** prior to any materials being applied. The wear ring areas required build-ups of 10 to 15 mm (about one-half inch) using **CP+**. Tolerances were especially critical since the plant required a running clearance of 0.005".

All the "wet areas" were then treated with **CeramAlloy CL+** to completely protect the casing from the accelerated attack it will be subjected to when returned to service.

The photos clearly show the "picture perfect" results. And, the total cost of rebuilding - including multiple blastings, all labor, materials, reassembly, etc. - was **less than 25% of the replacement cost of the casing!**



PROENECON SYSTEMS, S.A. · C/ Electricitat, 6. Pol. Ind. La Torre · 08760 - MARTORELL. Barcelona.  
· Telf: 93 211.15.30 · Fax: 93.253.11.31

Website: [www.proenecon.com](http://www.proenecon.com) · Email: [eneconib@proenecon.com](mailto:eneconib@proenecon.com)