

## CeramAlloy Gives New Life to Extinct Valve

This sea water valve from a ZIM Line vessel was desperately in need of replacement. However, these valves were not available any more and "replacement" was no longer a viable solution.

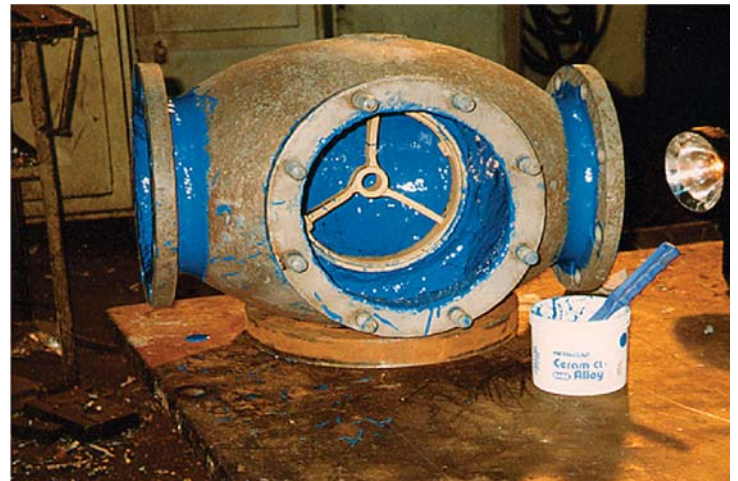
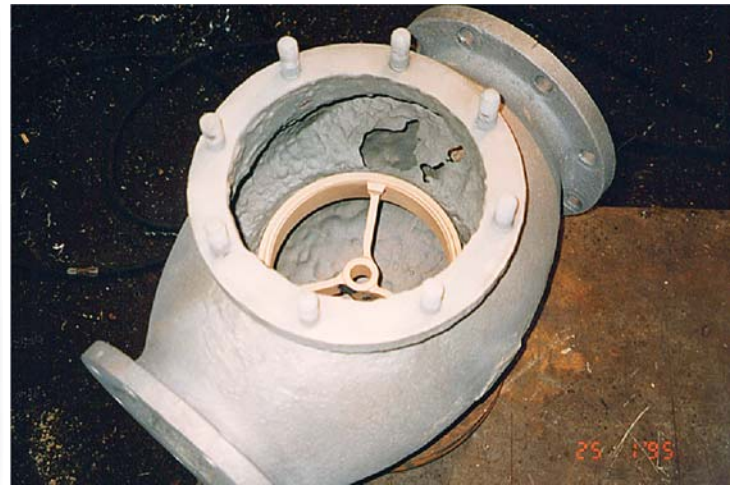
Faced with this serious problem, the vessel operator contacted the ENECON Distributor in Israel. In no time at all, an ENECON Engineer was on-site to provide a cost effective solution to the problem.

The local ship inspector decided that using ENECON materials to rebuild and also protect the valve from further erosion/corrosion damage **would be the best course of action.**

After first grit blasting the valve, the holed areas were rebuilt using METALCLAD DurAlloy

and Reinforcement Tape. After only 20 minutes, the entire inside of the valve was rebuilt with CeramAlloy CP+. All internal (wet) areas were then coated with CeramAlloy CL+ to complete the repair.

The entire project took only part of a day to complete and was carried out in the Shipyard. On the following day, the ship inspector conducted a pressure test on the valve. Although normally requiring a pressure of 2 atmospheres in such testing, **the rebuilt valve was taken to 6 atmospheres and the results were perfect!**



PROENECON SYSTEMS, S.A. · C/ Electricitat, 6. Pol. Ind. La Torre · 08760 - MARTORELL. Barcelona.  
· Telf: 93 211.15.30 · Fax: 93.253.11.31

Website: [www.proenecon.com](http://www.proenecon.com) · Email: [eneconib@proenecon.com](mailto:eneconib@proenecon.com)