

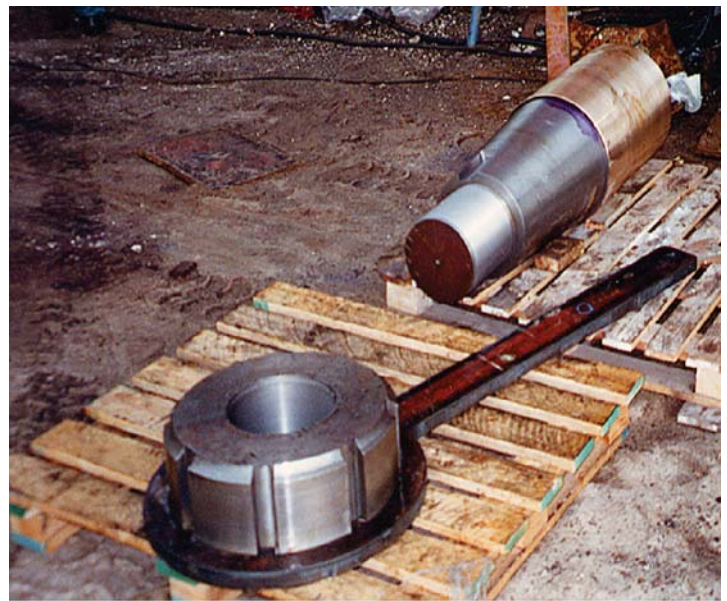
Rudder Pintle Housing Repair with DurAlloy Eliminates Expensive Machining Operation

During a dry-docking, the rudder pintle housing on the ship Galia Carmel was found to be severely corroded from the salt water. The normal repair procedure of welding and line boring of this tapered housing would have necessitated numerous man hours as well as the cost of expensive in-place machining equipment.

An ENECON Engineer in Israel recommended an alternative approach

using ENECON DurAlloy to rebuild the housing. And, by using the pintle to **form the housing to the desired dimensions**, the need for a subsequent machining operation would be eliminated!

After surface preparation, the DurAlloy was applied to both the housing and the pintle (previously coated with Release Agent) and reassembled, rebuilding the housing and protecting the area from further corrosion.



After reviewing and witnessing the application, the repair was accepted by the Lloyd's Surveyor upon completion.

PROENECON SYSTEMS, S.A. · C/ Electricitat, 6. Pol. Ind. La Torre · 08760 - MARTORELL. Barcelona.
· Telf: 93 211.15.30 · Fax: 93.253.11.31

Website: www.proenecon.com · Email: eneconib@proenecon.com