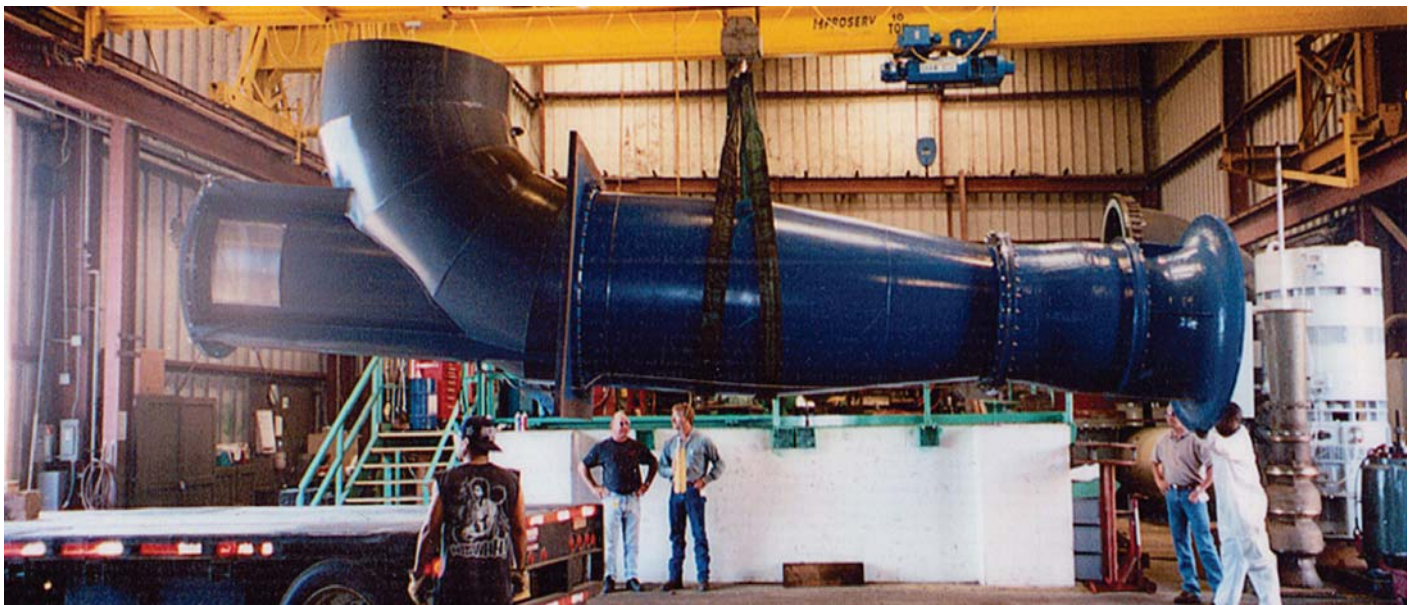


One of the Largest US Sewage Treatment Facilities Specifies CeramAlloy and CHEMCLAD to protect New Pump Components



A major sewage treatment plant located in the Washington, D.C. area was undergoing a multi-million dollar expansion and modernization.

As part of that program, they ordered over 50 new pumping systems. Based on their own in-service evaluations, the plant engineers were

convinced the METALCLAD CeramAlloy was the best material to protect their fluid flow components from aggressive erosion & corrosion attack.

Consequently, they specified that all their new pump components were to be protected with CeramAlloy on the interior surfaces and

CHEMCLAD SC on the exterior surfaces.

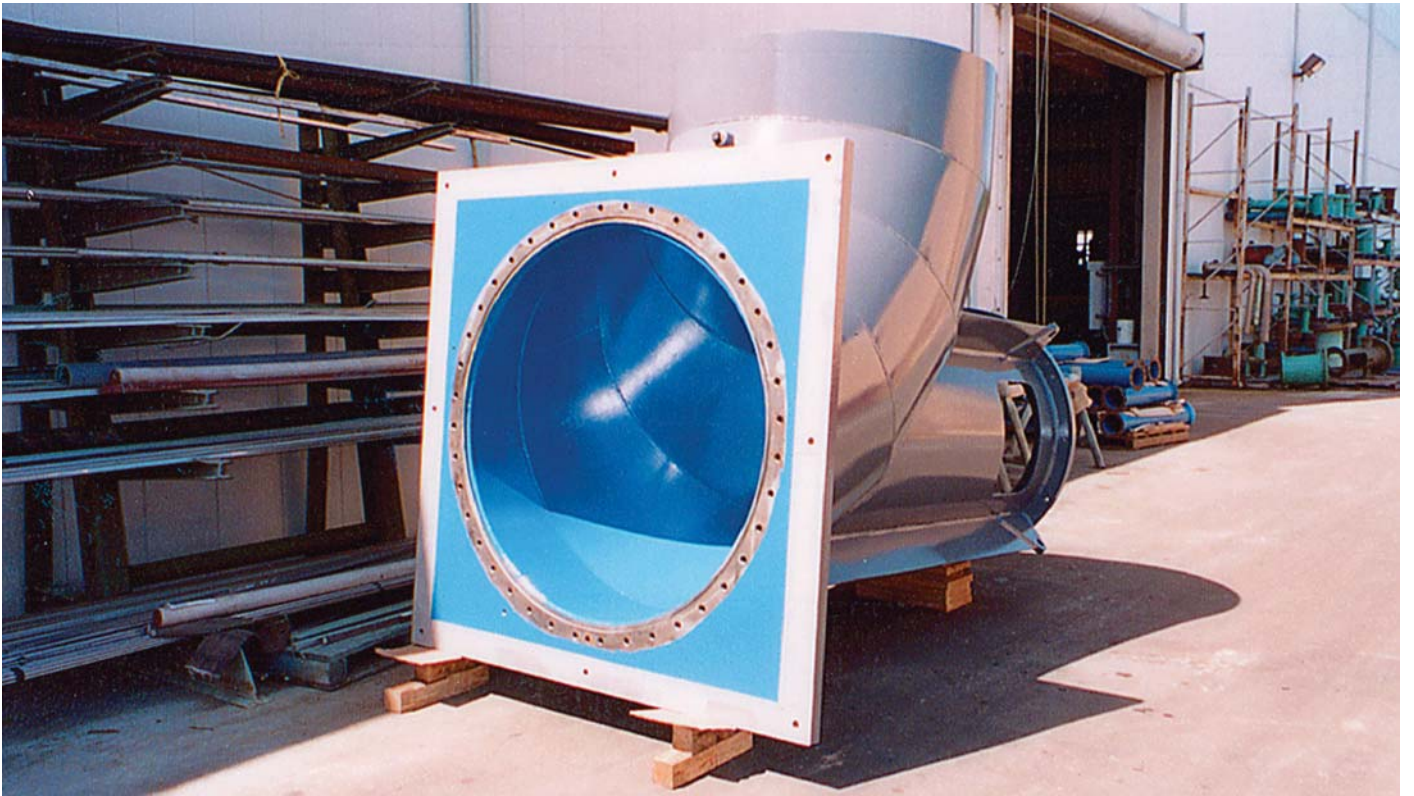
This massive project was bid out and most of the pump work was awarded to an internationally renowned pump manufacturer located near Houston, Texas.

Over \$300,000 worth of CeramAlloy CL+ as well CHEMCLAD SC were purchased in order to complete this extraordinary project.



PROENECON SYSTEMS, S.A. · C/ Electricitat, 6. Pol. Ind. La Torre · 08760 - MARTORELL. Barcelona.
· Telf: 93 211.15.30 · Fax: 93.253.11.31

Website: www.proenecon.com · Email: eneconib@proenecon.com



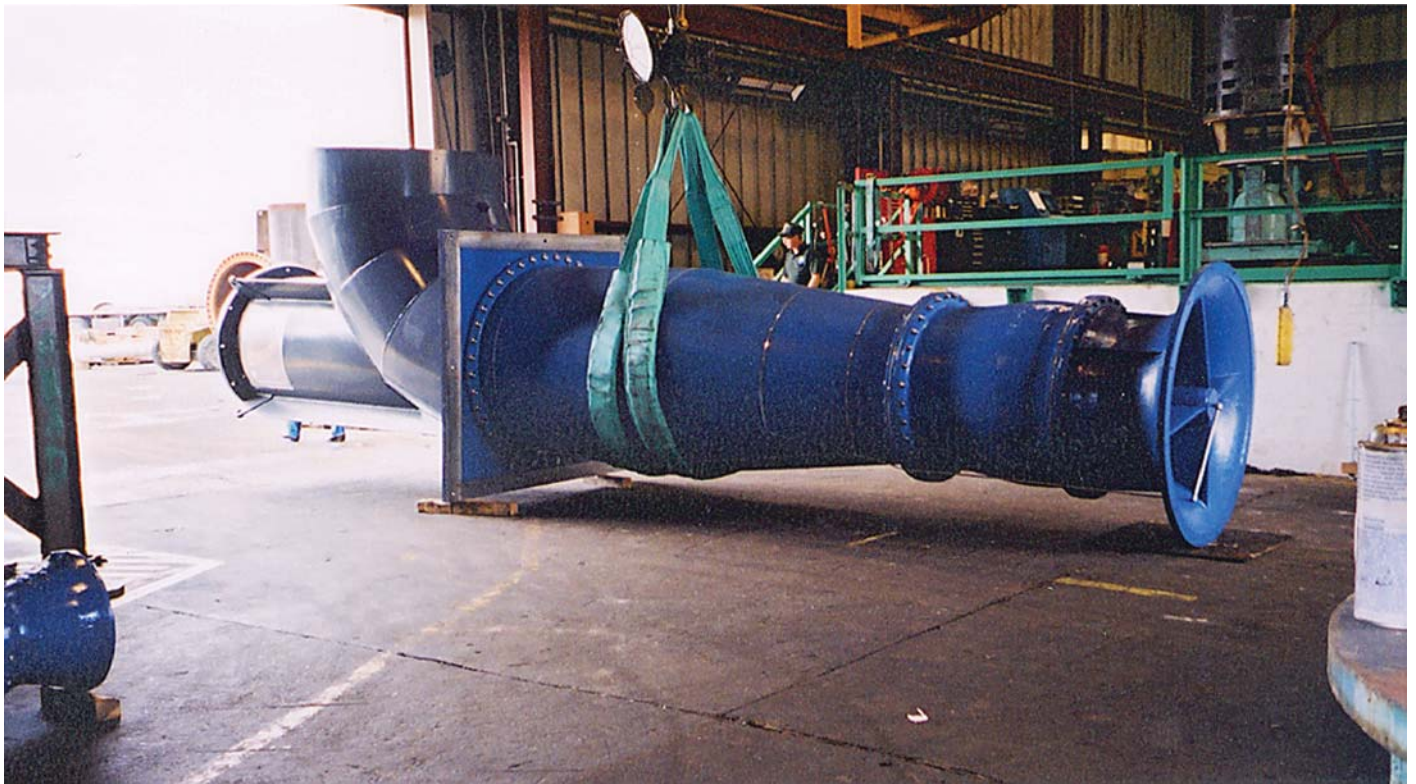
Completed Pump Head: CHEMCLAD SC outside...CeramAlloy inside.



Taper Columns & Pump Heads: CeramAlloy inside and outside.



Taper Columns: CeramAlloy inside and outside.



Completed Pump System: includes over 50 ENECON coated parts.