

New York City Wastewater Treatment Plant Turns to ENECON for Critical Pipe Repairs

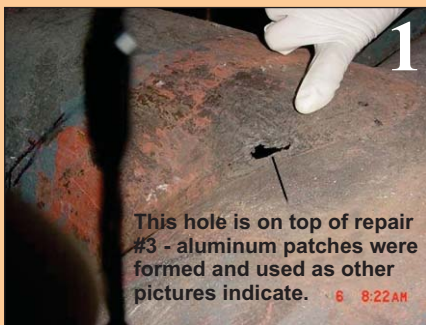
These photos, supplied by the ENECON North East Engineering Team, illustrate one of many pipe repairs that they carry out regularly throughout New York City.

In this application on a sewage pipe, DurAlloy was used with an aluminum plate to seal the hole.

Reinforcement mesh with additional DurAlloy was then wrapped around the pipe.



Two coats of CeramAlloy CL + AC were then utilized to complete this pipe-wrap procedure.



PROENECON SYSTEMS, S.A. · C/ Electricitat, 6. Pol. Ind. La Torre · 08760 - MARTORELL. Barcelona.
· Telf: 93 211.15.30 · Fax: 93.253.11.31
Website: www.proenecon.com · Email: eneconib@proenecon.com