



## Main Paper Feed Stock Pump Repaired & Resurfaced With CeramAlloy & CHEMCLAD

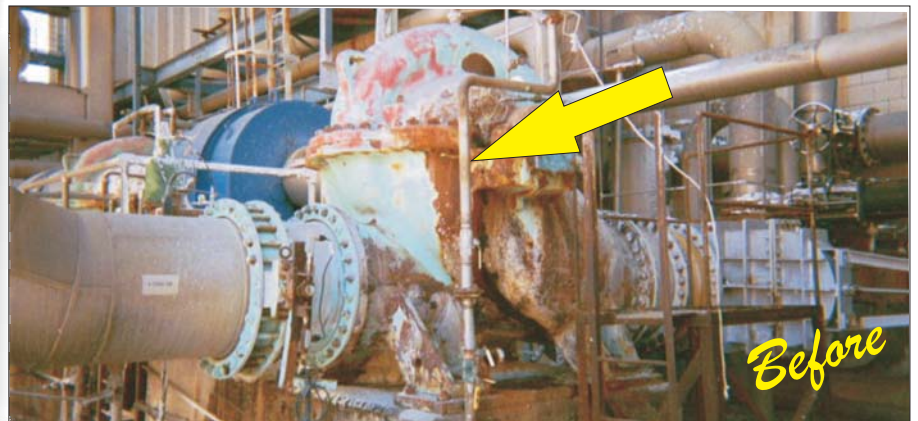
The plant engineers at this large paper mill located in North Carolina needed a cost effective and commercially proven repair solution for their 30-year old main paper feed stock pump which was severely eroded and corroded.

They suggested that all internal surfaces be repaired and resurfaced with CeramAlloy CP+AC and CL+AC. They then recommended that two coats of CHEMCLAD SC be used to protect all external surfaces from the aggressive paper mill environment.

This major project was successfully completed in just one week.

Since the plant has maintained detailed records of the pump's operation over the years they determined that the rebuilt and resurfaced pump was actually performing *more efficiently* than when it was first installed.

The local ENECON South East Engineering Team was called in.



PROENECON SYSTEMS, S.A. · C/ Electricitat, 6. Pol. Ind. La Torre · 08760 - MARTORELL. Barcelona.  
· Telf: 93 211.15.30 · Fax: 93.253.11.31

Website: [www.proenecon.com](http://www.proenecon.com) · Email: [eneconib@proenecon.com](mailto:eneconib@proenecon.com)