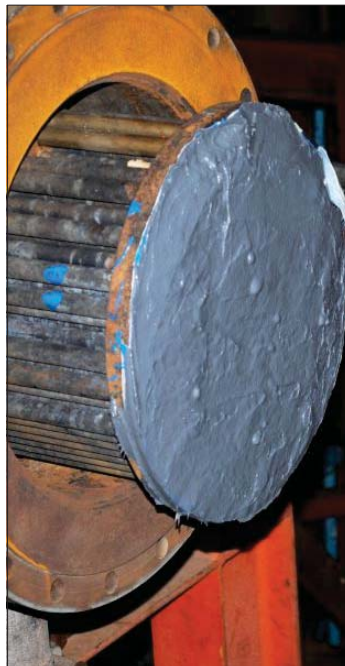
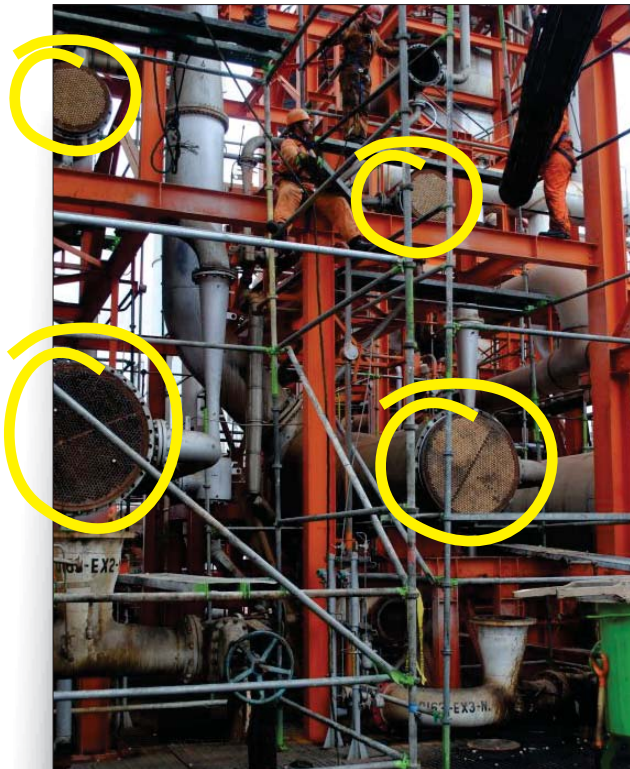
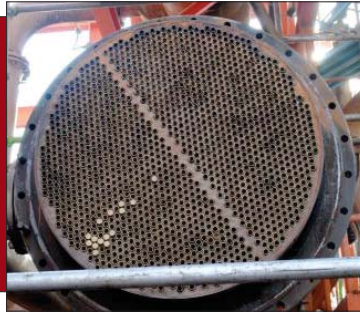


Mexico's Largest Petrochemical Company Specifies METALCLAD CeramAlloy for Repairs to Heat Exchanger Tube Sheets



- Client:** Petrochemical Plant
- Location:** Mexico
- Problem:** Severely corroded heat exchangers.
- Solution:** Grit blasting followed by CeramAlloy CL+AC, CeramAlloy CP+AC and final top coat of CeramAlloy CL+AC.
- Savings:** The ENECON solution approximately saved around 90% of the costs of previous repair methods.