

Preventative Maintenance with CeramAlloy Protects Intake Spools on U.S. Navy Cargo Ship



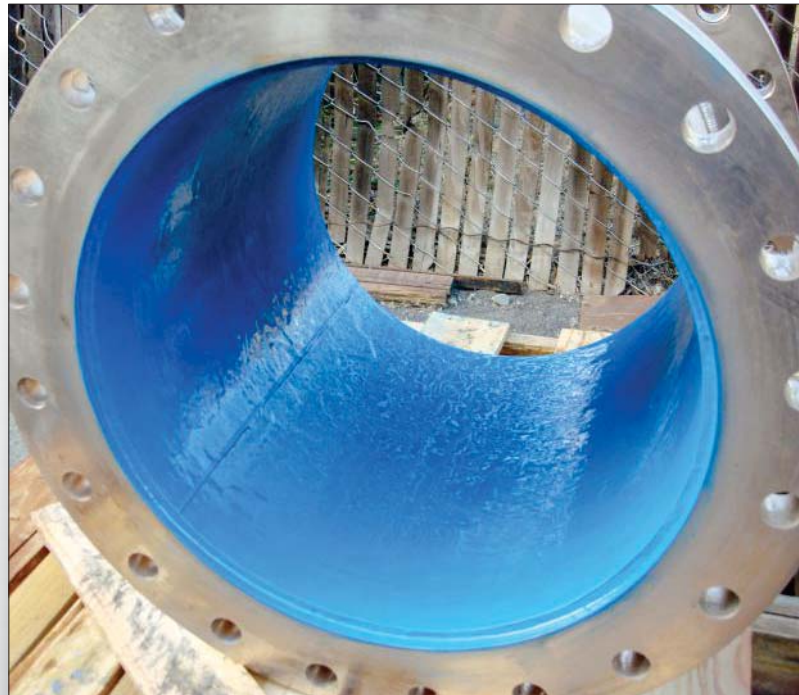
The U.S. Navy routinely uses ENECON solutions to repair and protect their onboard equipment.

In order to extend the service life of new intake spools and transition lines being installed on a cargo ship, the Navy chose to proactively protect them with CeramAlloy CL+AC.

After grit-blasting to a 4 mil profile, 2 coats of CeramAlloy CL+AC

were applied to some 15 spool pieces and transition lines that carry sea water to the engine for cooling.

CeramAlloy has been used by the U.S. Navy for applications like this for more than 20 years due to its ability to provide outstanding protection to equipment subject to salt water erosion and corrosion.



PROENECON SYSTEMS, S.A. · C/ Electricitat, 6. Pol. Ind. La Torre · 08760 - MARTORELL. Barcelona.
· Telf: 93 211.15.30 · Fax: 93.253.11.31

Website: www.proenecon.com · Email: eneconib@proenecon.com